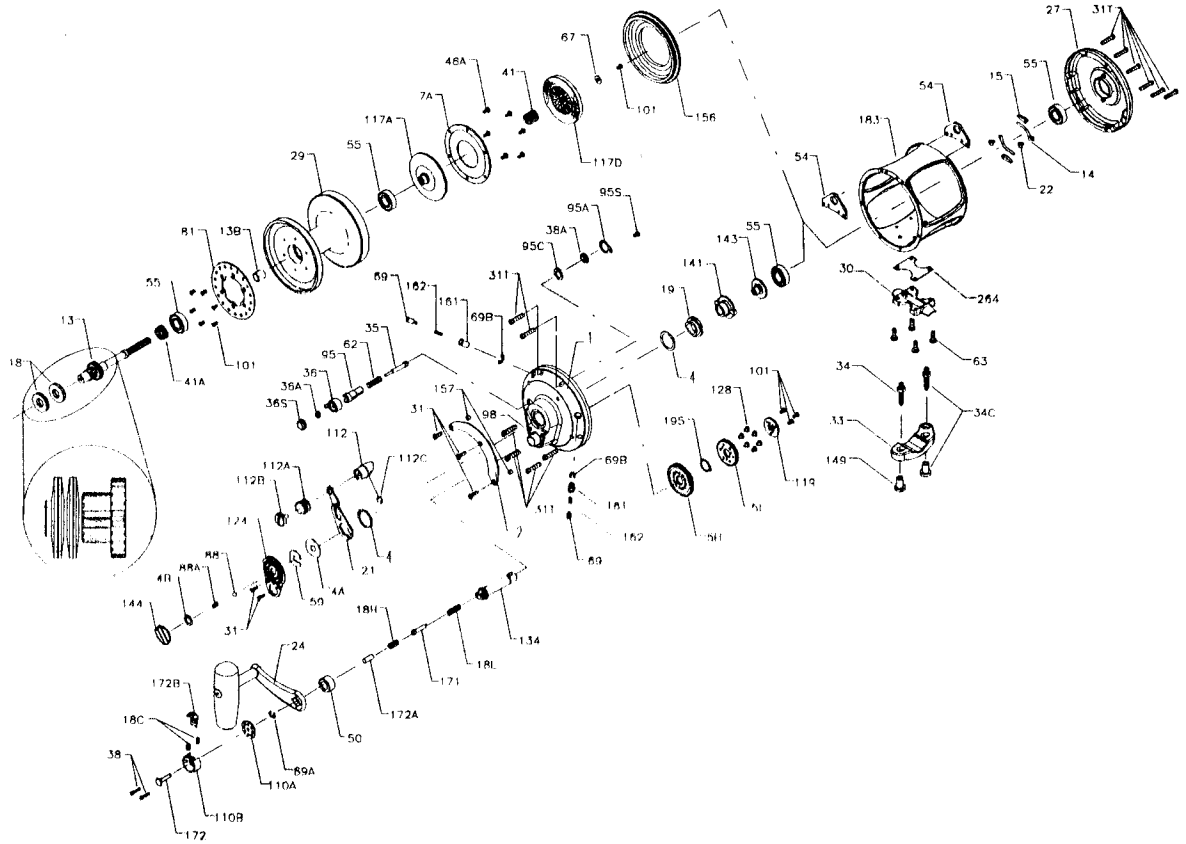




PARTS AND PRICE LIST FOR MODEL 70VS



Key No.	Part No.	Description	Price	Key No.	Part No.	Description	Price
1	001 070VS	Right Side Plate Assembly	\$105.00	62	082 050	Click Spring	\$.80
2	002 070	Quadrant Ring	8.00	63	063 030T	Stand Screw (4 req.)	.80
4	004 070	Cam Thrust Washer (2 req.)	.55	67	067 070	Pinion Gear Washer	.50
4A	004A070	Cam Teflon Washer	.80	69	069 050	Locating Pin (2 req.)	1.20
4B	004 012	Spacer Washer	.50	69A	069B030S	Retaining Ring	1.20
5H	005 070HS	Main Gear (High Speed)	18.00	69B	069B050	Retaining Ring (2 req.)	.80
5L	005 070LS	Main Gear (Low Speed)	23.00	81	081 070	Ratchet	5.45
7A	007A070	Metal Drag Washer	13.50	88	088 070	Preset Knob Ball	.60
13	013 070	Pinion Gear	42.00	88A	018C015KG	Preset Knob Spring	.60
13B	013B070	Pinion Gear Sleeve	1.25	95	095 070	Click Tongue Bushing	3.00
14	014 050	Dog Spring (2 req.)	1.00	95A	095B070	Click Bushing Washer	.65
15	015 050	Dog	.80	95C	095A050	Click Bushing Washer	.65
18	018 080	Disc Clutch Spring (4 req.)	1.55	98	098 070	Bridge Bushing	4.50
18C	018C015KG	Shift Button Spring (2 req.)	.60	101	101 030	Ratchet Screw (10 req.)	.45
18H	018H070	Shift Spring (Heavy)	.60	110A	110A015KG	Handle Locking Plate	2.10
18L	018L015KG	Shift Spring (Light)	.75	110B	110B015KG	Shift Housing	2.25
19	019 070	Eccentric Cam	13.00	112	112 070	Eccentric Lever Knob	4.00
21	021 070	Eccentric Lever	7.00	112A	112A070	Knob Sleeve	1.25
22	022 109	Dog Spring Screw (2 req.)	.55	112B	112B070	Eccentric Knob Screw	2.25
24	024 070	Handle Complete	37.00	112C	112C070	Eccentric Knob Plug	.60
27	027 070VS	Left Side Plate-Assembly	95.00	117A	117A070	Retaining Plate w/Drag Washer	16.25
29	029L070	Spool	115.00	117D	117D070	Drive Plate w/Drag Washer	16.25
30	030 050T	Stand	21.00	119	119 015KG	Coupling Plate	2.35
31	031T070	Short Screw (5 req.)	.55	124	124 070	Bridge Cover	3.25
31T	031T080	Side Plate Screw (12 req.)	.55	128	128 080ST	Low Gear Pins (6 req.)	.75
33	033 070	Rod Clamp	10.00	134	134 070	Gear Stud	11.00
34	034 070	Clamp Screw (2 req.)	2.25	141	141 070	Cam Follower	8.25
34C	034C070	Rod Clamp Screw w/Nut	5.25	143	143 070	Preset Screw	4.50
35	035 070	Click Tongue	3.25	144	144 070	Preset Knob	7.25
36	036 050	Click Button	7.00	149	149 070	Rod Clamp Nut (2 req.)	3.00
36A	036 700	Click Button Nut	.90	156	156 070	Drag Cover	5.25
36S	036S080ST	Click Button Cap	.40	157	157S012LT	Quadrant Spacing Bushing (2 req.)	.80
38	038 010	Shift Housing Screw (2 req.)	.40	161	161 050	Locating Pin Bushing (2 req.)	1.20
38A	038 710	Click Bushing Nut	.50	162	162 050	Locating Pin Spring (2 req.)	.50
41	041 050	Drag Spring	4.00	171	171 015KG	Shift Plunger	2.75
41A	041 070	Bearing Spring	.90	172	172 015KG	Shift Button (Low)	2.00
46A	046A704	Drag Washer Screw (6 req.)	.45	172A	172A070	Spring Spacer	1.25
50	050 080ST	Shield	2.10	172B	172B015KG	Shift Button (High)	6.00
54	054A080S	Harness Lug (2 req.)	4.15	183	183 070VS	Tube Frame	110.00
55	055 080	Ball Bearing (4 req.)	16.00	195	195 600	Retaining Ring	1.35
59	059 050	Slotted Washer	.80	264	264 301	Stand Gasket	1.60